



## SPIRITUAL CANADA MEMBERSHIP

Becoming a Spiritual Canada Member is an easy process. Our main criteria are that you are offering a Spiritual, Holistic, or Organic product or service.

It's sometimes hard to know where to start with your Member Listings. We suggest answering the three questions below, providing a head shot photograph, and as much additional detail as possible.

Download the [Membership worksheet](#) to easily collect your Member Listing information prior to submitting it online.

## THE THREE QUESTIONS

- **What has brought you to this work?**

Provide a little of your history. What guided you to this work? What or who inspired you? What training or certifications do you have?

**What services do you offer and how do they assist others?**

Provide headings and descriptions. Keep it brief, as you can link your listing to your website. You can also identify all the services you offer from our searchable list of service categories. Here is an example from member [Lori Brant's listing](#).

***"One-on-One Coaching***

*I work with clients one-on-one, over the phone, by internet or in person. My specialty is uncovering perceptual patterns that keep clients stuck, helping them transform those perceptions and to create new strategies to perceive and move through life in powerful and loving ways".*

**What philosophy do you live by?**

Share some of your philosophy. How do you approach life? What does your daily practice look like?



## TESTIMONIALS

Please provide three customer testimonials. It is important to ensure you have the customer's permission to use their name and testimonials on this website. The testimonials will be documented in the following format:

*"Spiritual Canada has provided me with an opportunity to market my services and make the right connections to help my business grow." – Fred Penner, Niagara Falls, ON*

Customer testimonials can also include up to two images.

## PROFILE PHOTO

You will need to upload a profile photo when submitting your profile. Your photo should be square or landscape in shape, with a minimum size of 1000 x 1000 pixels. Images in WEBP, PNG or JPEG format are acceptable.

## WWW & SOCIAL MEDIA

Strengthen your online presence by sharing your website URL and social media connections on your Listing. Supported social media services are:

- Facebook
- X/Twitter
- Instagram
- LinkedIn
- YouTube
- TikTok

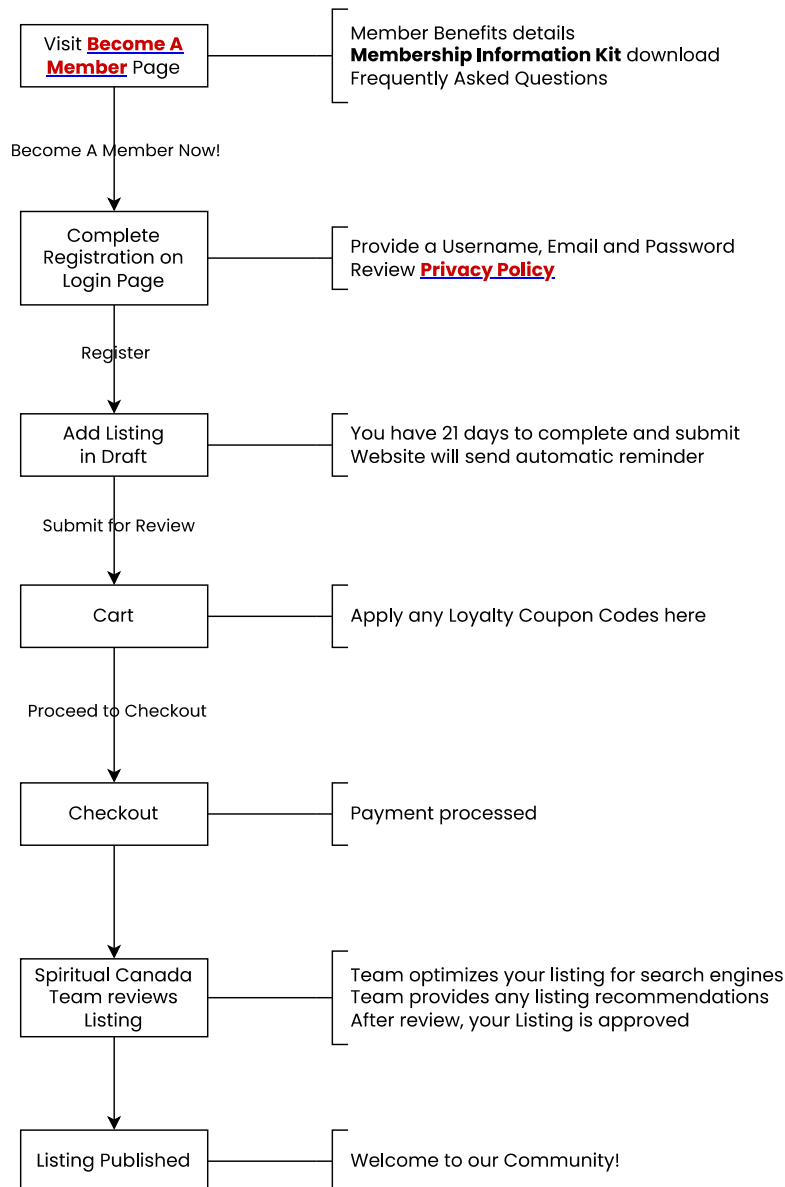
## QUALIFICATIONS & CERTIFICATIONS

You may share any qualifications and certifications related to the services offered on your Listing.



## MEMBERSHIP SIGN-UP PROCESS

Once you have gathered your information you are ready to sign up for Membership and submit your Listing. The diagram below is an overview of the Membership sign-up process.





## STEP – BY – STEP

Here is a step through the Membership sign-up process.

1. Review the Spiritual Canada [member benefits](#) page. While there you can download a worksheet to help gather details for your profile.
2. Go to the [Spiritual Canada login](#) page
3. Fill out the Register portion of the screen with your desired username, a valid email address, and your password. Click the checkbox to indicate you have read and understand Spiritual Canada's [Privacy Policy](#). Clicking the **Register** button submits your details to create the account Login account. Save these details
4. You will receive an account validation email from Spiritual Canada. Click on the link to validate your account. You will be logged into your account automatically and your account validation is complete.  
*Accounts not validated are automatically deleted after 2 weeks!*
5. Whenever you [log in to](#) Spiritual Canada, you will be directed to your [Listing dashboard page](#) entitled **My Listings**.
6. Click on the **Add Listing** button. This will show the various payment plans available. Refer to [Payment Plans](#) in this document for more details.
7. If you previously completed the Membership worksheet you can quickly copy & paste details into your Listing, otherwise complete your Listing now.
8. Once done, click **Add to cart** to save your Listing.
9. On the **Cart** page, click **Proceed to checkout** if you're ready to publish your listing. If not, you have 3 weeks to return to your draft listing, complete it, and publish it.
10. You can return to your **My Listings** dashboard by clicking the **More** menu and selecting **My Listings**.
11. Click the gear menu next to your Listing and select **Edit** to make any changes. Click the **Save Changes** button to update your Listing.



12. When ready to publish your draft Listing, click the gear menu next to your listing and select **Submit for review**. You will be asked to select a payment plan again. Make your selection and click **Add to cart** to proceed.
13. On the **Cart** page, you can review the Membership fee amount that will be charged to your payment card. With Interac e-Transfer, this is the amount to transfer. **Proceed to checkout** to submit payment.
14. On the **Checkout** page, enter your billing details, including your address and postal code. The tax rate will be recalculated based on your billing address.
15. Enter your payment information including card number, expiry date, and card verification code (CVC). You have the option to securely save your payment details for future charges.
16. Check the box to signify you have read and agree to Spiritual Canada's [terms and conditions of service](#).
17. Clicking the **Place order** button processes your Membership payment.
18. After payment processing, you will see a screen showing your order details. This is also emailed to your registered email address.
19. If your Membership selection supports Interac e-Transfer, transfer the total amount to [payments@spiritualcanada.ca](mailto:payments@spiritualcanada.ca). Include your order number in your e-transfer message. Please note it can take up to 48 hours to process Interac payments.
20. You can always find your previous order details and order numbers on your **My Listings** dashboard under the **Orders** tab.
21. The Spiritual Canada team is notified once you place your Membership order. Your Listing will be reviewed within 48 hours. You will be automatically notified once your Listing is approved.



## P A Y M E N T   P L A N S

Spiritual Canada provides flexible payment types and renewal frequency.

Memberships paid using a major credit card or Visa debit can be set to an automatic payment plan that renews monthly or annually.

Members can also choose an annual Membership option that allows Interac e-Transfer in addition to the other payment options. Members choosing this payment plan must log into Spiritual Canada to renew their Membership and submit payment.

If you wish to change your payment plan, you may do so within 30 days of your annual Membership renewal date (or before your next

Membership rates for 2024 are \$275/year or \$27.50/month excluding tax. Taxes (PST or HST) are calculated based on the billing address provided at checkout and after any discounts are applied.

A Loyalty Discount is available to Members after 1 year (or 12 months for monthly Memberships).

Card payments are managed through [Stripe](#), a secure payment processor.